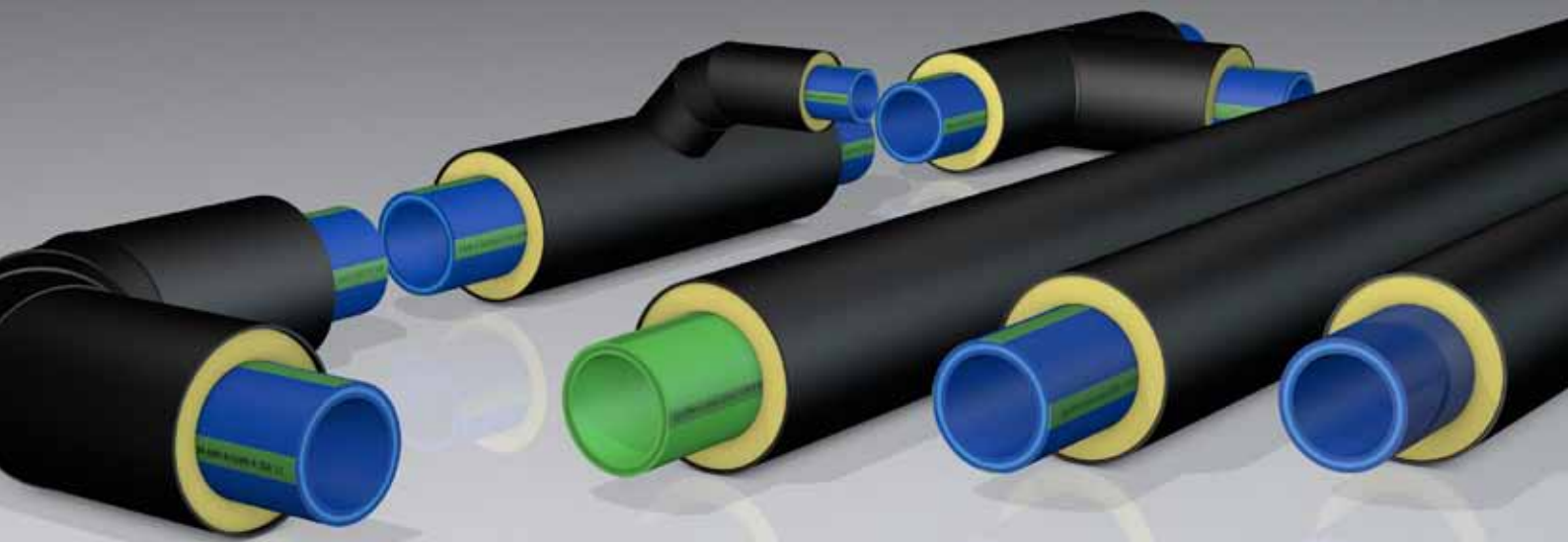


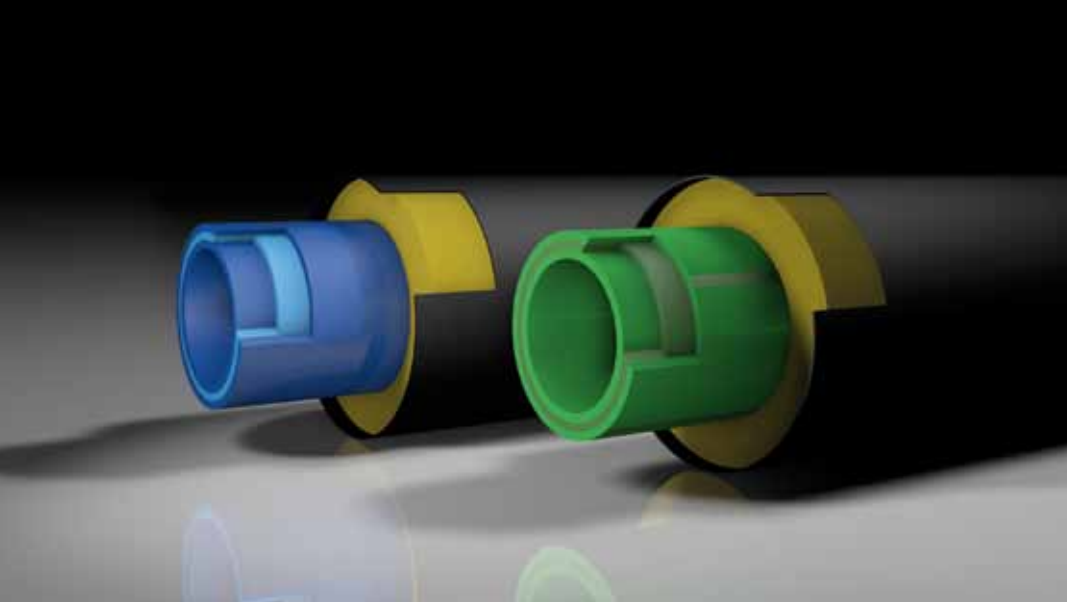


aquatherm green pipe ti
aquatherm blue pipe ti



aquatherm
state of the pipe





aquatherm ti - PRE-INSULATED PIPE SYSTEMS for district heating

System technology

One of the most energy-efficient methods for transporting heating or cooling over long distances is by the use of buried piping. To achieve the necessary insulating characteristics needed for this application, aquatherm offers factory pre-insulated aquatherm green pipe TI, aquatherm blue pipe TI and the oxygen-tight aquatherm blue pipe OT TI system for drinking water and heating/cooling networks, with operating pressures up to 20 bar (290 psi) and operating temperatures up to 90° C (190° F).

The aquatherm pipe systems are factory-made preinsulated. They are available in the dimensions according to table as:

- aquatherm green pipe TI - Faser composite pipe system SDR 7,4
- aquatherm green pipe TI - Faser composite pipe system SDR 9
- aquatherm blue pipe OT TI - Faser composite pipe system SDR 11
- aquatherm blue pipe TI - Faser composite pipe system SDR 17,6

These systems are insulated with closed cell PUR rigid foam and coated with a casing pipe made of HDPE.

System elements

For all insulated aquatherm ti pipe systems the following system elements are available:

- pipes (5,8 m and 11,6 m lengths)
- bows 45°
- bows 90° (short and long design)
- branches
- reducing branches
- cross-over branches
- closing collars
- insulation sockets and accessoires
- special fittings on request

Fields of application

- construction of heating systems
- climate and chilled water technology
- potable water supply
- process water plants
- industrial water supply

System advantages

- low weight
- higher flow rate due to increased inner diameter
- high stability
- absolutely corrosion resistant
- resistant against chemicals
- high impact rate
- less pipe friction
- heat- and sound insulating characteristics
- very good welding properties
- high heat-stability
- easy processing

Climate and chilled water technology





Fusion

aquatherm faser composite pipes are joined by socket-welding in the dimensions 32 – 125 mm, and butt-welding in the dimensions 160 – 315 mm.

By the fusion of pipe and fitting the plastic melts to a homogeneous material unit. Pipe and fitting are heated by means of specific welding tools and subsequently just joined; finished!

More detailed information and instructions on the welding process and equipment are available in our technical catalog E10101.

aquatherm TI-socket

In order to produce the subsequent insulation of the connections professionally and properly on the site, insulating sockets and accessories are available.



Dimensions

Outside diameter Medium pipe	aquatherm green pipe TI Faser composite pipe SDR 7,4	aquatherm green pipe TI Faser composite pipe SDR 9	aquatherm blue pipe TI/ OT TI Faser composite pipe SDR 11	aquatherm blue pipe TI Faser composite pipe SDR 17,6	Outside diameter Casing pipe
d_a (mm)	DN				d_a (mm)
32	25	25	25	-	90
40	32	32	32	-	110
50	40	40	40	-	110
63	50	50	50	-	125
75	50	-	65	-	140
90	65	65	80	-	160
110	80	80	-	-	200
125	-	100	100	100	225
160	125	125	125	150	250
200	150	150	150	200	315
250	175	200	200	250	400
315	-	250	250	300	450



Management System
 ISO 9001:2008
 ISO 14001:2004
 ISO 50001:2011
 www.tuv.com
 ID 0091005348

aquatherm GmbH

Biggen 5 | D-57439 Attendorn | Phone: +49 (0) 2722 950-0 | Fax: +49 (0) 2722 950-100

Wilhelm-Rönsch-Str. 4 | D-01454 Radeberg | Phone: +49 (0) 3528 4362-0 | Fax: +49 (0) 3528 4362-30

info@aquatherm.de www.aquatherm.de